

Padauk

Latin name: Pterocarpus soyauxii







Country of origin: Cameroon, Gabon

Density: 810 Kg/cu m

Hardness: Hard

Stability: Small movement

Formats:

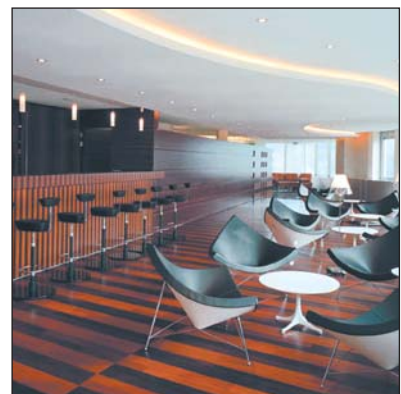
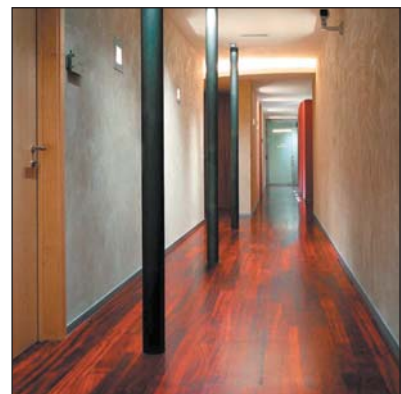
<p>Lames parquets</p>  <p>10 x 60 x 300mm</p>	<p>Classique mince</p>  <p>10 x 70 x 400 to 1200mm</p>	<p>Classique</p>  <p>14 x 70 x 420mm</p>
<p>Maximo</p>  <p>15 x 90 x 400 to 1200mm</p>	<p>Maximo large</p>  <p>15 x 135 x 600 to 2000mm Bevel edges</p>	<p>Maximo big</p>  <p>22 x 100 x 400 to 1200mm</p>

Description: Sapwood - whitish, very distinct • Heartwood: Colour red with occasional bright coral colouring and with darker veins of brown on exposure to light • The sporadic white colouring does not lead to any deterioration in the quality of the wood • Grain: Straight with light cross-grain • Coarse with no silver grain

Physical characteristics:

Density of 12% (Kg/cu m) MV12: 770 • Volumetric shrinkage for 1% of moisture v% = 0.43

Notes: Exceptionally high durability • Not vulnerable to lyctus beetle attack • Medium impregnability • Very good for nautical constructions



Padauk